



TABLE OF CONTENTS

VENUE PRICING.....	p.2
WEDDING PACKAGES.....	p.3
B'NAI MITZVAH PARTIES.....	p.4-5
MEMORIALS.....	p.6
PAVILION RENTAL PRICING.....	p.7-8
AV DETAILS.....	p.9
VALET PARKING.....	p.10
EVENT RENTAL ADDITIONS.....	p.11
ADDITIONAL COSTS.....	p.12
TIMELINE FOR BOOKING AN EVENT...	p.13
FREQUENTLY ASKED QUESTIONS.....	p.14
DRAPING.....	p.15-19
FURNISHINGS INVENTORY.....	p.20
COOKING & HEATING.....	p.21
CALCULATE YOUR PRICE.....	p.22

2023-2024 All prices subject to change without notice.
Credit card payments subject to 4% credit card fee



VENUE	FEES SAT-SUN	FEES WEEKDAYS	SECURITY DEPOSIT
Greer Social Hall • 4,800 sq ft • Capacity for banquets with a dance floor: 299 • White dance floor: 28 ft by 24 ft; stage: 50 ft W by 20 ft D	\$5600	\$4600	\$1500
Corwin Family Sanctuary & Greer Social Hall night party with dividing wall • 8,400 sq ft • Capacity for banquets: 299	\$6600	\$5600	\$1500
Corwin Family Sanctuary & Greer Social Hall without dividing wall • 8,400 sq ft • Capacity for banquets: 299-550 • Price incrementally increases due to guest count • Draping of Bima required • Beige chairs removed	0-299 \$7,000 300-350 \$8,000 351-400 \$8,500 401-450 \$9,000 451-500 \$9,500 501-550 \$10,000	0-299 \$6,000 300-350 \$7,000 351-400 \$7,500 401-450 \$8,000 451-500 \$8,500 501-550 \$9,000	\$1500

Included in the package:

- 299-550 silver Chiavari chairs (depends on package)
- 30-55 round 60 inch, tables (depends on package)
- 20 rectangular 8 ft tables and 20 rectangular 6 ft tables
- 7 high-top and 7 low-top cocktail tables
- 2 serpentine / sweetheart tables
- white dance floor – 28 ft by 24 ft (may be made smaller)
- courtyard – an outdoor space (weather permitting)
- foyer – often used for cocktails and appetizers
- celebrants' suites
- state-of-the-art kitchen
- security guards
- lobby restroom attendants
- facilities staff
- house manager on duty

Agreement terms:

- 50% non-refundable down-payment and a signed contract
- security deposit may be fully or partially refunded following facility inspection, and based on contract terms
- draping of Bima required with wall-up packages
- valet parking required
- if guest count exceeds 299, advance coordination with the Beverly Hills Fire Marshal is also required
- weekday events: 6:30 p.m. – 12 a.m. (5 & 1/2 hour rental)
- weekend events: 6 p.m. – 12 a.m. (6 hour rental)
- extended event hours until 1:30 a.m. : \$1500 surcharge
- All event rentals require permits from the City of Beverly Hills
- Invitations must specify, "valet parking"



VENUE	FEES SAT-SUN	FEES WEEKDAYS	SECURITY DEPOSIT
Greer Social Hall • 4,800 sq ft • Capacity for banquets with a dance floor: 299	\$5600	\$4600	\$1500
Corwin Family Sanctuary & Greer Social Hall with dividing wall (Ceremony & reception) • 8,400 sq ft • Capacity for banquets: 299	\$6600	\$5600	\$1500
Corwin Family Sanctuary & Greer Social Hall without dividing wall • 8,400 sq ft • Capacity for banquets: 299-550 • Price incrementally increases due to guest count • Draping of Bima required • Beige chairs removed	0-299 \$7,000 300-350 \$8,000 351-400 \$8,500 401-450 \$9,000 451-500 \$9,500 501-550 \$10,000	0-299 \$6,000 300-350 \$7,000 351-400 \$7,500 401-450 \$8,000 451-500 \$8,500 501-550 \$9,000	\$1500
Add-on of Chuppah (optional)	\$100	\$100	
Add-on of Belle Chapel (Small ceremony or Ketubah signing) (Optional—Greer Social Hall booking required)	\$500	\$500	

Included in the package:

- 299-550 silver Chiavari chairs (depends on package)
- 30-55 round 60 inch, tables (depends on package)
- 20 rectangular 8 ft tables and 20 rectangular 6 ft tables
- 7 high-top and 7 low-top cocktail tables
- 2 serpentine / sweetheart tables
- white dance floor – 28 ft by 24 ft (may be made smaller)
- courtyard – an outdoor space (weather permitting)
- foyer – often used for cocktails and appetizers
- celebrants' suites
- state-of-the-art kitchen
- security guards
- lobby restroom attendants
- facilities staff
- house manager on duty

Agreement terms:

- 50% non-refundable down-payment and a signed contract
- security deposit may be fully or partially refunded following facility inspection, and based on contract terms
- draping of Bima required with wall-up packages
- valet parking required
- if guest count exceeds 299, advance coordination with the Beverly Hills Fire Marshal is also required
- weekday events: 6:30 p.m. – 12 a.m. (5 & 1/2 hour rental)
- weekend events: 6 p.m. – 12 a.m. (6 hour rental)
- extended event hours until 1:30 a.m. : \$1500 surcharge
- All event rentals require permits from the City of Beverly Hills
- Invitations must specify, "valet parking"



VENUE	EVENT TYPE	FEES SAT-SUN	FEES WEEKDAYS	SECURITY DEPOSIT
Greer Social Hall <ul style="list-style-type: none"> Rental includes Foyer and Courtyard 4,800 sq ft Capacity for banquets with a dance floor: 299 	Bar/Bat Mitzvah Dinner Party	\$6000	\$5000	\$2000
Corwin Family Sanctuary & Greer Social Hall without dividing wall <ul style="list-style-type: none"> 8,400 sq ft capacity for banquets: 299-550 Price incrementally increases due to guest count Draping of Bima required Beige chairs removed 	*Bar/Bat Mitzvah Dinner Party	0-299 \$7,000 300-350 \$8,000 351-400 \$8,500 401-450 \$9,000 451-500 \$9,500 501-550 \$10,000	0-299 \$6,000 300-350 \$7,000 351-400 \$7,500 401-450 \$8,000 451-500 \$8,500 501-550 \$9,000	\$2000

Included in the package:

- 299-550 x silver Chiavari chairs (dependent on package)
- 30-55 x round 5 ft tables (dependent on package)
- 20 x rectangular 8 ft tables; 20 x rectangular 6 ft tables
- 7 x high-top (cocktail) tables; 7 x low-top tables; 3 serpentine tables
- White dance floor – 28 ft by 24 ft
- Easel
- The Courtyard – an outdoor space (weather permitting)
- Foyer – often used for cocktails and appetizers
- 2 lounges / dressing rooms
- State-of-the-art kitchen
- Security guards
- House manager on duty
- Cleaning staff
- Maintenance staff

Agreement Terms:

- 50% non-refundable down-payment and a signed contract
- security deposit may be fully or partially refunded following facility inspection and based on contract terms
- draping of Bima required with wall-up packages
- valet parking required
- if guest count exceeds 299, advance coordination with the Beverly Hills Fire Marshal is also required
- weekday events: 6:30 p.m. – 12 a.m. (5 & 1/2 hour rental)
- weekend events: 6 p.m. – 12 a.m. (6 hour rental)
- extended event hours until 1:30 a.m.: \$1500 surcharge
- All event rentals require permits from the City of Beverly Hills
- Invitations must specify, "valet parking"



B'nai Mitzvah Policies,

The final guest count contracted for will be specified on your original or revised venue rental contract.

Seating is required for all guests including children age 2 and up. Lounge seating is not considered primary seating.

The hostess is expected to provide a guest list with emergency contacts for all minors, alphabetized by last name, and to provide staffing for check-in tables at the entrance to ensure guest count does not exceed seating capacity. In the absence of a guest list monitored by check-in staff, security will cut off admissions once guest count exceeds seating capacity.

Based on the importance of offering age-appropriate engagement, we recommend that hostesses provide as many games and vendor tables for the children as possible (photo booths, fortune tellers, t-shirt airbrushing, etc.) to make for a memorable and enjoyable evening. All games and vendors must be set up within Greer Hall. No children's activities may take place in the Foyer or the Courtyard.

Staff and security are empowered to revoke access to anyone and remove them from the premises.

In addition to the security deposit on file, a credit card number with expiration date, secret code, and zip code, must be on file to pay for any additional costs such as vandalism, fire alarm activation, noise, excess guest count, alcohol outside the building, smoking, or any other policy violations including insufficient valet parking due to inaccurate guest counts.

Restroom use will be monitored by staff and access may be controlled to prevent overcrowding.



VENUE	FEES SAT-SUN	FEES WEEKDAYS	SECURITY DEPOSIT
Corwin Family Sanctuary & Greer Social Hall with dividing wall • 8,400 sq ft; capacity 299	\$2900	\$2900	\$1500

Included in the Corwin Family Sanctuary & Greer Social Hall memorial package:

- 299 silver Chiavari chairs in Greer Hall
- 299 beige armchairs in the Sanctuary
- round 60" dining tables
- rectangular 8 ft buffet tables
- high-top cocktail tables
- state-of-the-art kitchen
- security guards, restroom attendants, facilities staff

Agreement terms:

- 100% non-refundable down-payment and a signed contract
- security deposit may be fully or partially refunded following facility inspection and per contract terms
- licensee pays 10% gratuity for valet parking based on parking rates
- 4 hour max rental
- weekday start time 6:30 p.m. or later
- weekend start time between 5 p.m. or later
- Invitations must specify, "valet parking"

ABRAHAM'S VALET PARKING RATES

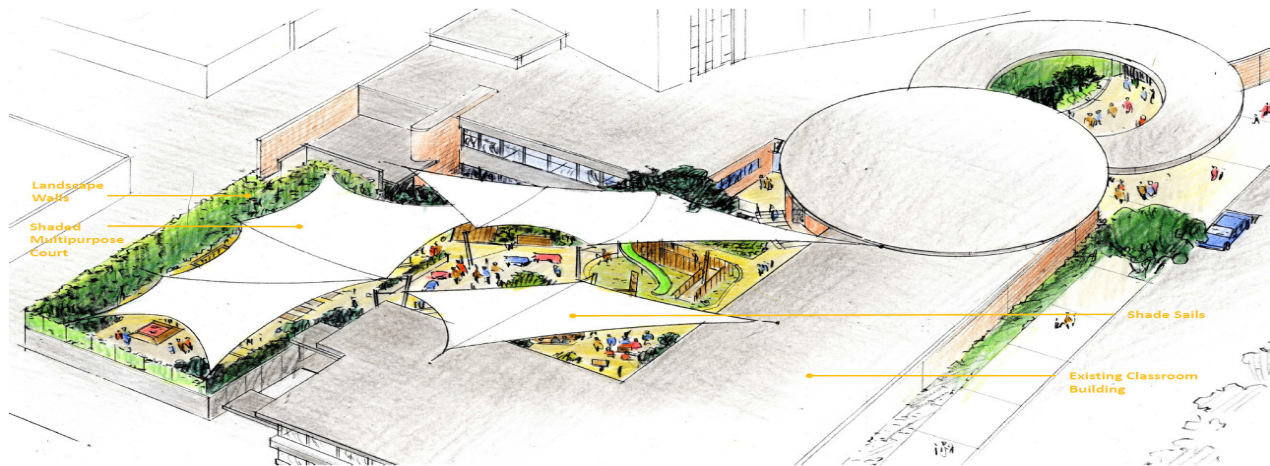
MEMORIALS	Licensee pays 10% gratuity in addition to posted rates			4 HOURS SAT-SUN	4 HOURS WEEKDAYS	EXTRA HOURS
100-200 GUESTS (UP TO 130-150 CARS)				\$3480	\$3807	\$494
201-299 GUESTS (UP TO 151-220 CARS)				\$4705	\$5120	\$702



PAVILION VENUE PRICING



EVENING PARTIES (EX.-WEDDING RECEPTION ONLY)		6 HOURS WEEKDAYS <small>School Break Only</small>	6 HOURS WEEKENDS
100-150 guests 99 guests or less		\$3000 \$2000	\$4000 \$3000
DAYTIME PARTIES (KIDS' BIRTHDAYS, BRIS, BABY SHOWERS, ETC.)		3 HOURS WEEKDAYS <small>School Break Only</small>	3 HOURS WEEKENDS
100-150 guests 99 guests or less		\$1000 \$500	\$2000 \$1000
WEDDING PACKAGES CEREMONY & RECEPTION		6 HOURS WEEKDAYS <small>School Break Only</small>	6 HOURS WEEKENDS
Pavilion + Greer Hall 100 guests		\$4600	\$5600
Chapel + Pavilion 99 guests or less		\$2600	\$3600
WALL-UP GALA		1 st 1 & ½ hours <small>School Break Only</small>	1 st 1 & ½ hours
550 GUESTS OR LESS Cocktail hour in Pavilion - flat rate ADD ON		+ \$1000	+ \$2000
B'NAI MITZVAH OUTDOOR PARTY AFTER CEREMONY IN SANCTUARY		3 HRS. SAT. DAY	4 HRS. SAT PM
100-150 GUESTS 99 GUESTS OR LESS		\$2400 \$1600	\$3200 \$2400



PAVILION ADD-ONS TO GREER RENTAL	CHUPPAH INCLUDED	1 & 1/2 HOURS ANY DAY FLAT RATE	
Photography - extra fee to take pictures outdoors in Pavilion		+\$500	
Bedeken, Tisch, Ketubah signing (can do all three)		+\$500	
Henna party (100 max) early start time Sat-Sun		+\$500	
Dessert buffet (299 max)		+\$500	
PAVILION MEMORIALS	3 HOURS WEEKDAYS School Break Only	3 HOURS WEEKENDS	
100-150 guests (day or evening)	\$2600	\$3600	
50-99 guests (day or evening)	\$1600	\$2600	
49 guests or less (day or evening)	\$1000	\$1600	
PAVILION SUMMER CAMP	MON-FRI		
8 a.m.-6 p.m. including classrooms	\$20,000 / month		
FILM & TV SHOOTS	DAILY RATE	WEEKLY RATE	
Weekdays 9 a.m.-5 p.m. (Except Fridays 9 a.m.-3 p.m.)	\$4000	\$10,000	
Weekends 9 a.m.-1 p.m.			

LAST MINUTE DISCOUNT (within 60 days) on all packages except memorials - 10% off rates
Outdoor Pavilion accessible via staircase



Launch	Dan	323.810.1465	dan@get-launched.com get-launched.com
LiveStream LA	Avi	310.877.8743	live-streamla.com
Grant Sound	Margaux	805.963.7756	margaux@grantsound.com

LIVESTREAMING

Launch's "livestreaming" price" \$300 flat rate

STAGE

Be sure to indicate on your floorplan whether the stage will be used during your event. If not, the stage curtains will be drawn closed and the stage will be used for storage.

WALK-THROUGH

Each contract includes one walk-through if requested, assuming the event is booked at least 60 days out (excluding memorials). The hostess should organize a day and time carefully so any vendors who need to attend the walk-through may do so together. Walk-throughs ordinarily take place weekday afternoons. The temple's vendors (AV, draping) do not participate in walk-throughs. Walk-throughs are allocated 30-45 minutes.

WEDDING REHEARSAL

Wedding contracts include one wedding rehearsal with the entire wedding party if requested. The date and time needs to be calendared as far in advance as possible. Rehearsals take place weekday afternoons.

KOSHERING THE KITCHEN

If using a kosher caterer, the caterer will arrange with the Rabbinical Council to have a Rabbi kosher the kitchen. Check with the temple to coordinate that the building will be open when the Rabbi plans to come, and that there is not any other event planned between the date of koshering and your party date



ABRAHAM'S VALET PARKING RATES

WEDDINGS, B'NAI MITZVAH, BIRTHDAYS, ANNIVERSARIES & ENGAGEMENT PARTIES	6 HOURS SAT-SUN	6 HOURS WEEKDAYS	EXTRA HOURS
100-150 GUESTS (UP TO 70 CARS)	\$2405	\$2645	\$243
151-200 GUESTS (UP TO 90 CARS)	\$2570	\$2827	\$271
201-250- GUESTS (UP TO 110 CARS)	\$2915	\$3206	\$299
251-300- GUESTS (UP TO 130 CARS)	\$3250	\$3575	\$355
301-350- GUESTS (UP TO 150 CARS)	\$3590	\$3949	\$411
351-400- GUESTS (UP TO 175 CARS)	\$4440	\$4884	\$545
401-450- GUESTS (UP TO 200 CARS)	\$5301	\$5831	\$726
451-500- GUESTS (UP TO 225 CARS)	\$6105	\$6715	\$960
501-550- GUESTS (UP TO 250 CARS)	\$7045	\$7750	\$1150

PUBLISHED RATES ARE MINIMUM CHARGES - Rates are subject to increase between date of contract signing and date of party

- * For holidays there will be a surcharge in addition to all prices shown
- * Signed contract required 60 days prior to the event
- * Payment in full required 30 days prior to the event
- * Mandatory 10% gratuity will be added to all contracts
- * Contact the parking office for pricing for other types of events

Abraham's Valet • 1133 Linden Ave., Suite 4, Glendale, CA 91201 • 818-334-7474
info@abrahamsvalet.com • abrahamsvaletparking@gmail.com



ADDITION	FEE
Early set up/load in <ul style="list-style-type: none">• Recommended for glatt kosher caterers.• Please check availability with special events manager. Schedule is in accordance with temple calendar.	\$500 for 4 hours \$1000 for 8 hours
Late pick up/ load out <ul style="list-style-type: none">• Please check availability with special events manager. Schedule is in accordance with temple calendar.	\$500
Change of date fee <ul style="list-style-type: none">• Only available for rentals that are more than 4 months out.	\$600
Chapel rental <ul style="list-style-type: none">• Capacity 50, only available as on add-on to a Greer Hall rental	\$750
Sanctuary rental <ul style="list-style-type: none">• Capacity 299, auditorium seating, ideal for screenings & conferences	\$2900
Extended party hours <ul style="list-style-type: none">• Party ends at 1:30 am (only available at time of contract signing)	\$1500



1. \$1500-2000 security deposit

Security deposit may be refunded fully or partially based on an inspection of the facility following the event and per the following contract terms:

- physical damage noted by our house manager and photographed as documentation
- 20% penalty for late payments made beyond 3 days past the due dates specified in the contract
- \$150 fine for each late submission of required documents: vendor list, timeline, floorplan, & valet parking contract

2. Valet parking

- Valet required per City of Beverly Hills
- Abraham's Valet Parking is our only full-service valet parking service
- 818-334-7474, David@AbrahamsValet.com, www.AbrahamsValet.com

3. Beverly Hills Fire Department

www.beverlyhills.org/departments/firedepartment/specialfirepermitsapplications/

- Permits—\$153 for basic public assembly permit, required for all events
- Permits: \$76.50 each for draping and candles if needed
- Fire Safety Officer—\$156 per hour (required for 300 guests or more)
- Permit and FSO fees are determined by the City and subject to change
- Confirm which permits you will need with the fire department
- Please begin this process no later than 1 month out from your event
- Apply for permits **on-line 3 weeks prior to the event**
- Prices set by the City and subject to change without notice
- Use the link shown in blue to navigate to the city's website to apply for permits

4. Draping of Bima for wall-up events: \$600



TIMELINE FOR BOOKING AN EVENT

Booking the venue (to secure date and venue)

- Sign contract
- Pay 50% of rental fee

60 days prior to event

- Remaining 50% of rental fee
- Sign valet parking contract and forward temple a copy

30 days prior to event

- Apply for permits with City of Beverly Hills fire department
- Pay \$1500 damage deposit

14 days prior to event

- Submit floorplans to temple
- Submit vendor list to temple
- Submit timeline to temple

7 days prior to event

- Provide Temple Emanuel with copy of completed permits from City of Beverly Hills.

Three to four weeks after event

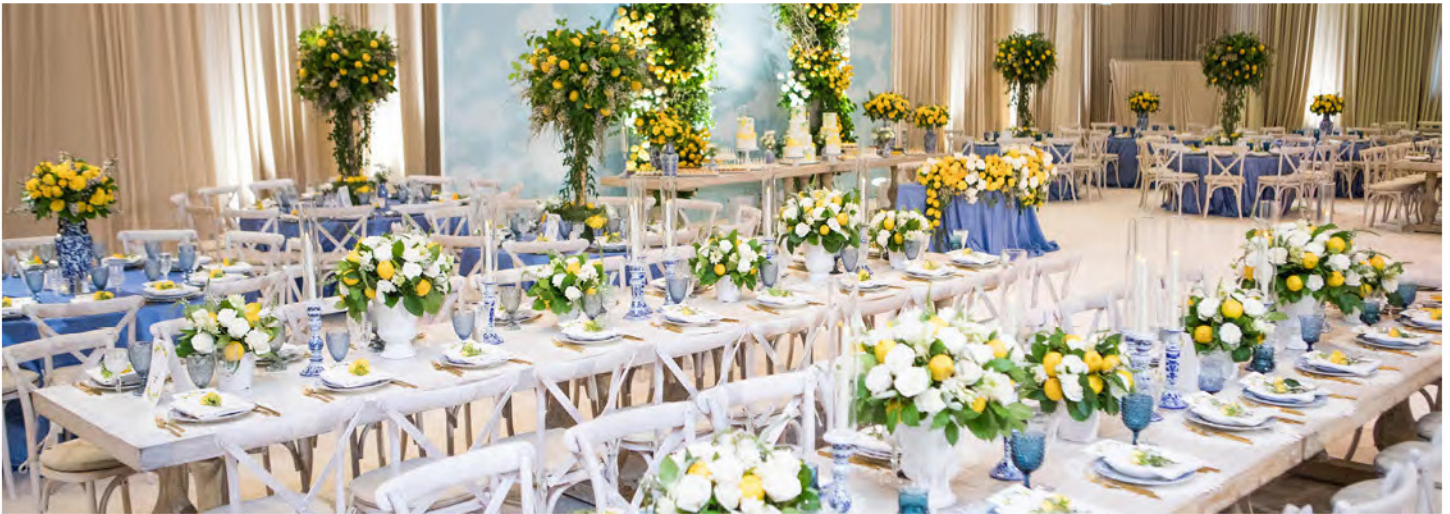
- Security deposit may be fully or partially refunded if venue is in acceptable condition upon inspection and subject to contract terms.
- 3 professional photos of the venue taken with lights up prior to the beginning of the event, must be submitted to Temple Emanuel prior to release of the damage deposit refund.

Permit Link

www.beverlyhills.org/departments/firedepartment/specialfirepermitsapplications/



Photo: Silvia Mautner



What type of events can be booked at Temple Emanuel?

- Baby namings
 - Birthday parties
 - B'nai Mitzvah parties*
 - Brit Milah
 - Engagement parties
 - Holiday parties
 - Memorials
 - Weddings
- *B'nai Mitzvah ceremonies are reserved for Temple members only

What is required to secure the date and venue for my event?

- 50% payment of the rental fee (non-refundable)
- A signed contract

Can I hold the space without payment?

You can hold one date, one time for up to five business days.

Does my event have to be religious in nature?

No. We welcome religious, secular, social and civic events.

How many people can Temple Emanuel accommodate?

The combined facilities can accommodate from 100 to 550 people. The event spaces vary in size, and the capacity of each will be determined by the desired set-up. We are happy to help you determine which space(s) will work best for you.

Can I rent the space if I'm not a member of Temple Emanuel?

Absolutely! Non-temple members can rent spaces for any occasion other than a Bar or Bat Mitzvah ceremony.



- * Place draping orders directly with Heavenly Draping
- * Note Antonio does not participate in walk-thrus * Cash prices include tax & delivery
- * Zelle payments to 323-440-7271 * Bank of America Elfego Antonio Morales Due 30 days in advance
- * heavenly_rentals@hotmail.com * Fabric flammability certificates on file with BH Fire Department



GREER HALL

WHITE

Complete stage draping

\$1000

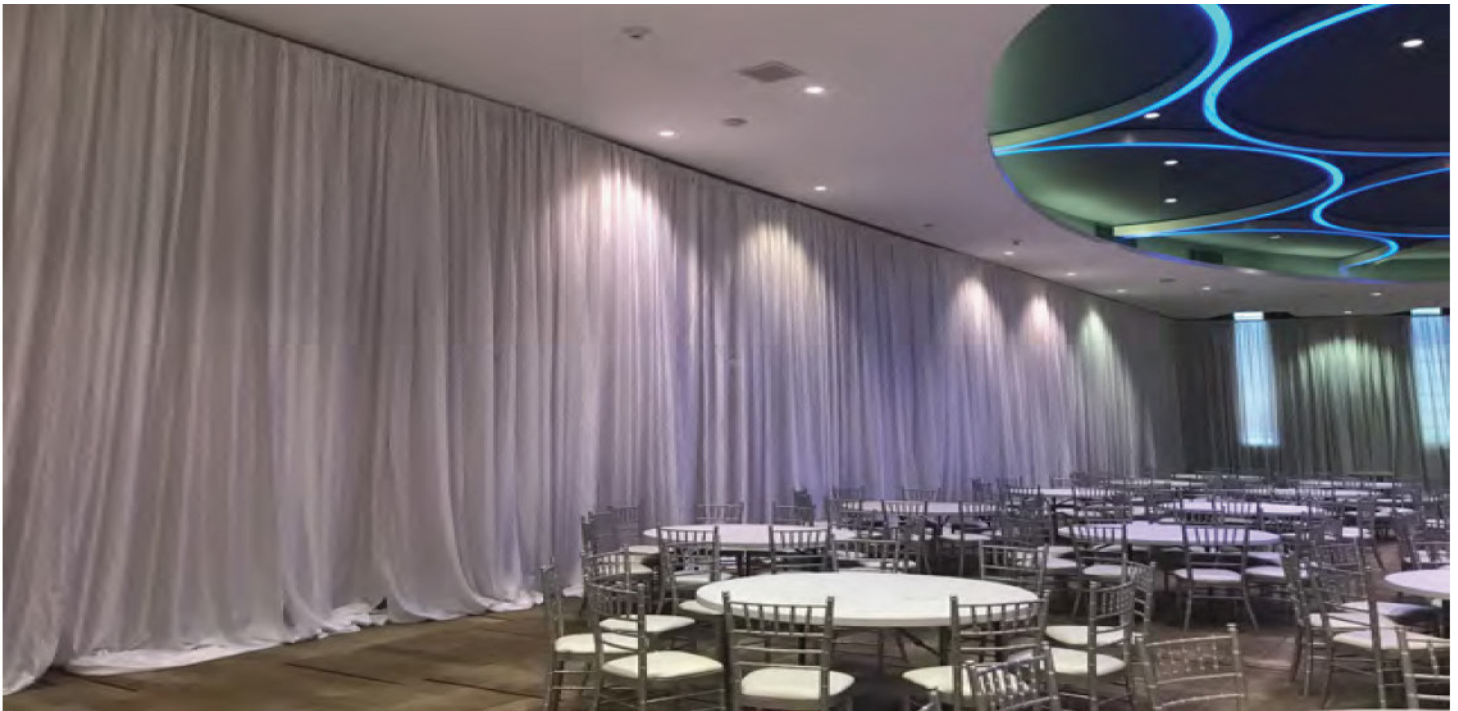


Both walls adjacent to the stage
(set of 2)

\$700

Draping of entire Greer Social Hall

\$3500



GREER HALL

WHITE

Partition wall

\$800



Brick walls (set of 2)

\$1000



THE SANCTUARY

WHITE

Bima - stage at top of curved ramps

\$800

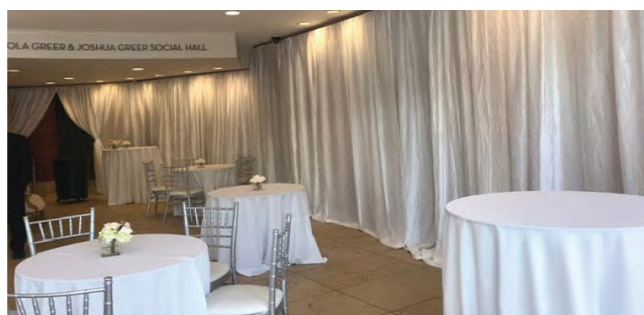


Brick walls (set of 2)

\$1800



THE SANCTUARY	WHITE
Partition wall	\$700
Draping of entire Sanctuary	\$3100



THE FOYER	WHITE
Curved brick wall	\$700
Left side wall	\$100



THE COURTYARD

WHITE

Entrance covering the columns

\$800



Curved brick wall covering
the sculpture

\$200



SPECIAL EVENTS FURNISHINGS INVENTORY

GREER HALL

Tables:

60" rounds – 55 (seats up to 10 guests)

8' rectangles (30" wide) – 20 (for buffets, or seating)

6' rectangles (30" wide) – 20 (for wedding cake, place card table, gift table, etc.)

Sweetheart tables (serpentine) 170" long X 30" wide X 60" high – 3 (each table requires 2 tablecloths)

Chairs: silver Chiavari chairs – 299 (when a contract is for more than 299 guests, TEBH rents additional chairs)

Dance floor: 28' X 24' white (may be made smaller)

Easels: 4

Podium: 1 (beautiful acrylic, perfect for speeches, awards banquets, book readings)

Overhead projector screen 80" wide by 56" high (mobile): 1 (fits on stage)

Overhead projector: 1

Circular riser: 10' diameter X 12" high (for cake cutting ceremony, sweetheart table)

Stairs to access stage (may be decorated with flowers)

Stainless steel trash cans: 6

SANCTUARY

Chairs: 299 beige arm chairs

Overhead projector: 1

Screen: 1, lowers down from above Bima

Cordless microphones: 3

Piano: 1

FOYER & COURTYARD

High-boy 104" X 36" tall cocktail tables: 7

Low-boy 70" X 36" cocktail tables: 7

Shoji screens: 8



Cooking and Heating

INDOORS: STERNO ONLY

Propane fuel is not allowed. These cooking stations are examples of the types allowed with sterno heating only:

Bananas Foster/Crepes Suzette pans
Chafing dishes
Griddles
Gyro rotisserie spits
Omelette pans
Soup kettles
Woks

PROHIBITED ANYWHERE ON TEMPLE PROPERTY

Barbecuing
Deep fryers (portable)
Doughnut machines
Naan bread clay cookers
Open flames of any kind
Pizza ovens

PROHIBITED BEVERAGES

Exhibition bartending with sparklers or “cold flares”
Flaming cocktails

NO COOKING IN THE ALLEY

NO COOKING ON PUBLIC SIDEWALKS OR RIGHT-OF-WAY



WORKSHEET CALCULATE YOUR PRICE TOTAL OCCUPANCY COST

REQUIRED CHARGES	WALL DOWN	WALL UP
VENUE RENTAL FEE	\$ _____	\$ _____
EXTENDED HOURS	\$ _____	\$ _____
EARLY SET-UP FEE	\$ _____	\$ _____
DAMAGE DEPOSIT	\$ _____	\$ _____
VALET PARKING	\$ _____	\$ _____
PERMITS	\$ _____	\$ _____
SUB TOTAL	\$ _____	
DRAPING OF BIMA		\$ _____
FIRE MARSHAL		\$ _____
OPTIONAL EARLY SET UP	\$500	\$500
OPTIONAL EXTENDED PARTY HOURS	\$1500	\$1500
TOTAL	\$ _____	\$ _____